



**BENTON COUNTY**  
Parks Department

**STAFF REPORT TO  
BENTON COUNTY PARK BOARD**

**APRIL 2024**

**FINANCIALS**

<b>Park Development Fund Cash Balance:</b>	\$ 796,831.26 (Apr 05 2024)
<b>2024 Revenue from Camping &amp; Donations:</b>	\$ 0.00 (Apr 05 2024)

**GENERAL NEWS**

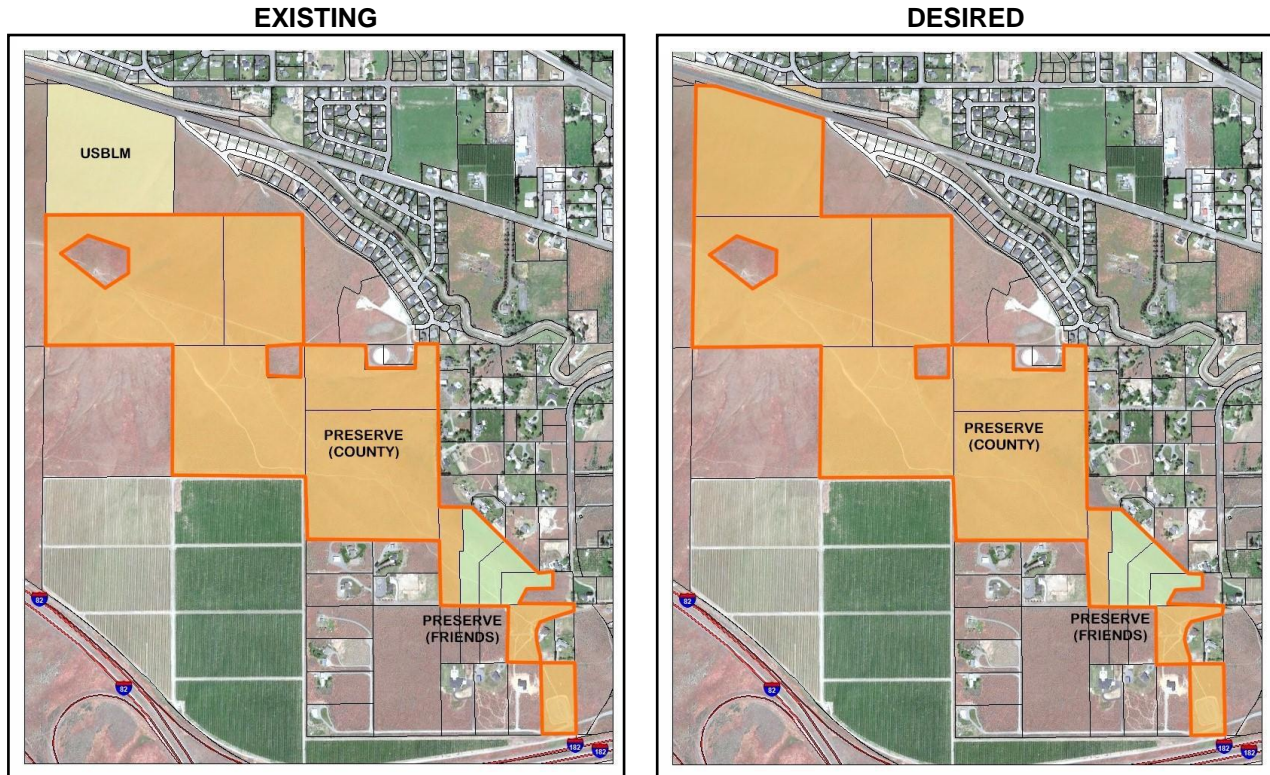
**Comprehensive Parks Plan:** At the April meeting we will work out the Board's priorities to incorporate into the final plan, then look toward getting that final plan knocked-out in the next month.

**BADGER MOUNTAIN CENTENNIAL PRESERVE**

**Badger Mountain Centennial Preserve – Westgate:** Staff completed a first round of renovation work on the uphill or eastern side of the parking lot. I am hoping to get another staff day out there or perhaps volunteers to assist with some more of the work for this spring session.

**CANDY MOUNTAIN PRESERVE**

**Candy Mountain Preserve – BLM Parcel:** Last year, Benton County submitted an application for a Recreation and Public Purposes lease for the Bureau of Land Management parcel on Candy Mountain, shown in the maps. This would be the same type of lease that we once had on much of RMSF before we converted that into a patent acquisition. Nothing happened for months. When I inquired in December and again in March I got no response from the staff person I was working with. I went 'up the ladder', which I don't like to do, but that did result in a response from the district manager and assignment of a new liaison whom I will be discussing this with on April 28. The idea here is to bring this parcel into the Preserve, possibly run a future trail over some portion of the property, and perhaps even acquire the patent later in the future.

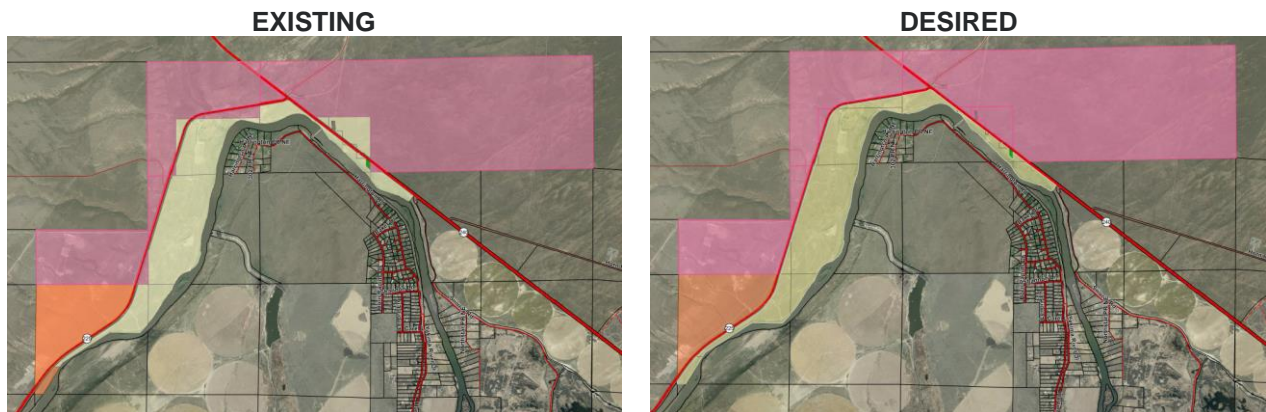


## HORN RAPIDS PARK

**Horn Rapids Park – Wanawish Dam Area:** The Barker Ranch approached us about a situation out at the park in the area of the dam. The air photo below doesn't show it particularly well, but there are two side roads heading from the main road down to the dam access location. These roads are meaningless and do not provide any particular vehicular access that cannot be otherwise had. The shorter of the two tracks side-traverses a fairly steep slope. The ranch manager says someone recently came down that on a four-wheeler and parked the vehicle in the canal. The other road just becomes a mud bog in the winter a la Hover Park and is again of no practical use. The ranch manager asked if we can block these and I agreed to that. We will be having the Road Department do this with some large "four-man" boulders. These locations are shown with the red lines on the air photo. We will then do some work next fall to restore these tracks (rip/harrow, reseed). The orange line represents the location of a gate we will install. This will allow a vehicle (County/Barker/emergency) to get in there if necessary. Perhaps we use this small action to restart our conversation about vehicular access throughout the Wanawish/Sunsplash area.



**Horn Rapids Park – Property Realignment:** I have literally worked on this item for over 20 years, off and on. Never has gotten any traction. The map shows existing property boundaries as shown in publicly-accessible assessor’s records. Federal, State, and County properties crisscross the highways in ways you would not expect. For example, if this is correct, you would enter Horn Rapids Park on County property, take a left turn toward the Boat Launch and drive through USDOE (Hanford) property, then re-enter County property at the launch. I have never been able to get anyone interested [at DOE] in cleaning this up. I have formally asked the Assessor to do a deep dive on this, going through all records and cadastral surveys to confirm the accuracy of the maps. So far, they are about halfway through that exercise and the maps appear to be correct. Assuming that continues to hold-up, I will ask commissioners to make a more formal request to DOE and the State to work toward resolving these property boundaries.



**Horn Rapids Park – Campground:** The campground is open for the season.

**Horn Rapids Park – Higgins Field Request:** Pacific Northwest National Laboratory has reached out with a request to stage some work they are doing at Higgins Field. I have forwarded this to MAA and we are evaluating the request to be sure it fits with MAA’s operations and what we can allow at the property.

## **RATTLESNAKE MOUNTAIN SHOOTING FACILITY**

Nothing new to report.

## **TWO RIVERS PARK**

**Two Rivers Park – Shop Cabinets:** We bought three replacement storage cabinets for the shop. These are the specialty cabinets for flammables, paints, solvents, fertilizers, etc.

**Two Rivers Park – Playground:** I will be ordering some fresh mulch for the Two Rivers and Vista playgrounds this spring. We are currently price shopping.

**Two Rivers Park – Water:** The water is not yet on at the park. We have a broken foot valve and another pump repair that needs to be made. We are hoping to have things squared-away next week.

**Two Rivers Park – Boardwalk:** I realize we are all getting antsy and cranky about this. I will be working with our Capital Projects folks next week to get this onto the bid calendar.

**Two Rivers Park – Annual Management Plan & Compliance Inspection:** The AMP has been submitted to the Corps. Our annual compliance inspection for Two Rivers and Hover has been scheduled for the morning of Thursday, May 30.

## **OTHER COUNTY PARKS**

**Horse Heaven Cemetery:** Nothing new to report.

**Horse Heaven Vista:** We are working on getting the restroom building removed.

**Hover Park:** Gate and boundary questions have been resolved. Procurement/Capital Projects will be bidding the project in April. The Board needs to discuss messaging and outreach I am putting this topic as the lead item on the May agenda.

**Vista Park:** Nothing new to report.

**Wallula Gap Preserve:** The Ayers Road property appraisal has been received. The environmental assessment will hopefully arrive by the end of April. The Board may have an executive session on this topic in May. There is also a matter specific to Ayers Road itself for us to discuss.

# # #